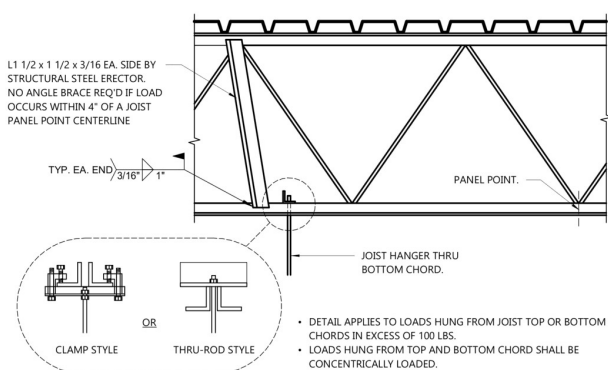


- ## KEYNOTES:
- NOT ALL KEYNOTES MAY APPEAR ON PLAN.
- 1 SEE WATER METER/ SOFTENER/ HEATER PIPING DETAIL FOR CONTINUATION.
 - 2 INTAKE AND EXHAUST FLUES UP TO VENTS THRU ROOF. INSTALL PER MANUFACTURER REQUIREMENTS.
 - 3 PROVIDE CAST IRON P-TAP AND PIPING 10' DOWNSTREAM OF RETHEMALIZER.
 - 4 EMERGENCY GAS SHUT-OFF VALVE LOCATED BELOW CEILING. VERIFY LOCATION WITH AHI PRIOR TO ROUGH-IN.
 - 5 BUNDLED SYRUP LINES TO BEVERAGE DISPENSERS S-285 AND FILTERED WATER LINES TO ICE MAKERS S-513 AND FROZEN BEVERAGE DISPENSER S-739.
 - 6 1/4" FILTERED WATER LINE DN IN UTILITY CEILING OF DRY PRODUCT LINE. PROVIDE SHUT-OFF VALVE ON FV PIPING IN CEILING NEAR CHASE.
 - 7 1/2" HOT AND COLD WATER DOWN WALL TO TB RETHEMALIZER. PROVIDE SHUT-OFF VALVE OUTSIDE OF WALL FOR CONNECTION TO RETHEMALIZER.
 - 8 1/2" SOFT WATER TO REVERSE OSMOSIS FILTER P-315 AND 1/2" FILTERED FROM REVERSE OSMOSIS FILTER. PROVIDE SHUT-OFF VALVE ON SOFT PIPE PRIOR TO CONNECTION TO FILTER.
 - 9 1/2" SOFT WATER. CONNECT TO WATER FILTER FOR BUNN POD BREWER P-147. PROVIDE SHUT-OFF VALVE PRIOR TO CONNECTION TO THE WATER FILTER.
 - 10 GAS SERVICE BY UTILITY PROVIDER. REQUIRED PRESSURE SHALL BE 7" W.C.
 - 11 SEE KITCHEN EQUIPMENT GAS PIPING DETAIL FOR MORE INFORMATION.
 - 12 OWNER FURNISHED OIL PUMPING SYSTEM. INSTALL PUMP AND ROUNDER 3/4" SCH. 40 BLACK STEEL PIPE AND 150# FITTINGS TO OIL TANK IN MECHANICAL SPACE. ALL PIPING SHALL BE PITCHED TO THE OIL TANK AT 1/8" MINIMUM PER FOOT. ALL PIPING SHALL BE INSULATED WITH 1" THICK INSULATION FROM FRYER TO GREASE TANK IN CEILING SPACE.
 - 13 INSTALL 2" SCH. 40 BLACK STEEL PIPE & OWNER FURNISHED PUMP TRUCK CONNECTION AT 48" ABOVE FINISH GRADE. ALL PIPING SHALL BE PITCHED TO THE OIL TANK AT 1/8" MINIMUM PER FOOT. ALL PIPING SHALL BE INSULATED WITH 1" THICK INSULATION FROM FRYER TO GREASE TRUCK CONNECTION.
 - 14 INSTALL (3) NEW GAS INSTANTANEOUS WATER HEATERS. SEE WATER HEATER DETAIL FOR CONTINUATION.
 - 15 3/4" DN ALONG WALL TO WATER FILTER S-286. SEE DETAIL 11/P3.2.
 - 16 SEE PRESSURE BOOSTER PIPING DETAIL FOR CONTINUATION.
 - 17 INSTALL DOWNSPOUT NOZZLE AT 18" A.F.F.

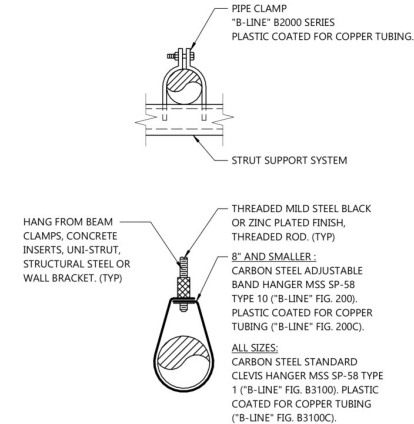
GAS LOAD SUMMARY		
ITEM	MBH INPUT	REQUIRED PRESSURE (1)
RTU-1	180	7" W.C.
RTU-2	180	7" W.C.
RETHERMALIZER	110	7" W.C.
DOUBLE FRYER	150	7" W.C.
GWH-1	199	7" W.C.
GWH-2	199	7" W.C.
GWH-3	199	7" W.C.
TOTAL	1,217	
GRAND TOTAL	1,217	

- GAS PRESSURE AT METER = 7" W.C

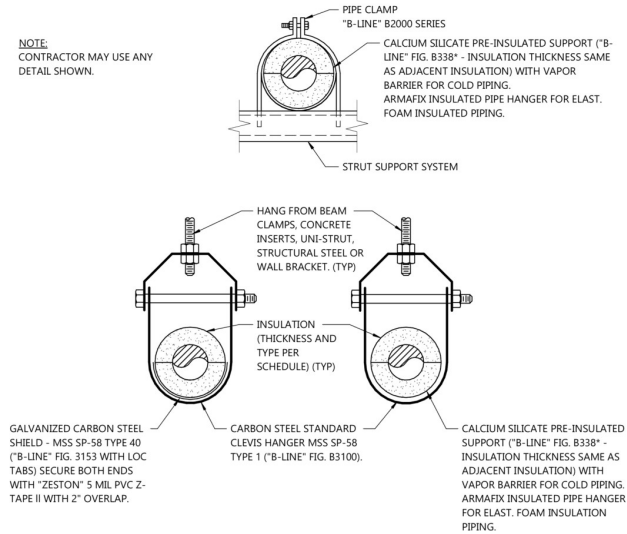
PLUMBING FIRST FLOOR PLAN



4 JOIST HANGER CONNECTION DETAIL
P3.0 NOT TO SCALE



3 UNINSULATED PIPE HANGER DETAIL
P3.0 NOT TO SCALE



2 INSULATED PIPE HANGER DETAIL
P3.0 NOT TO SCALE

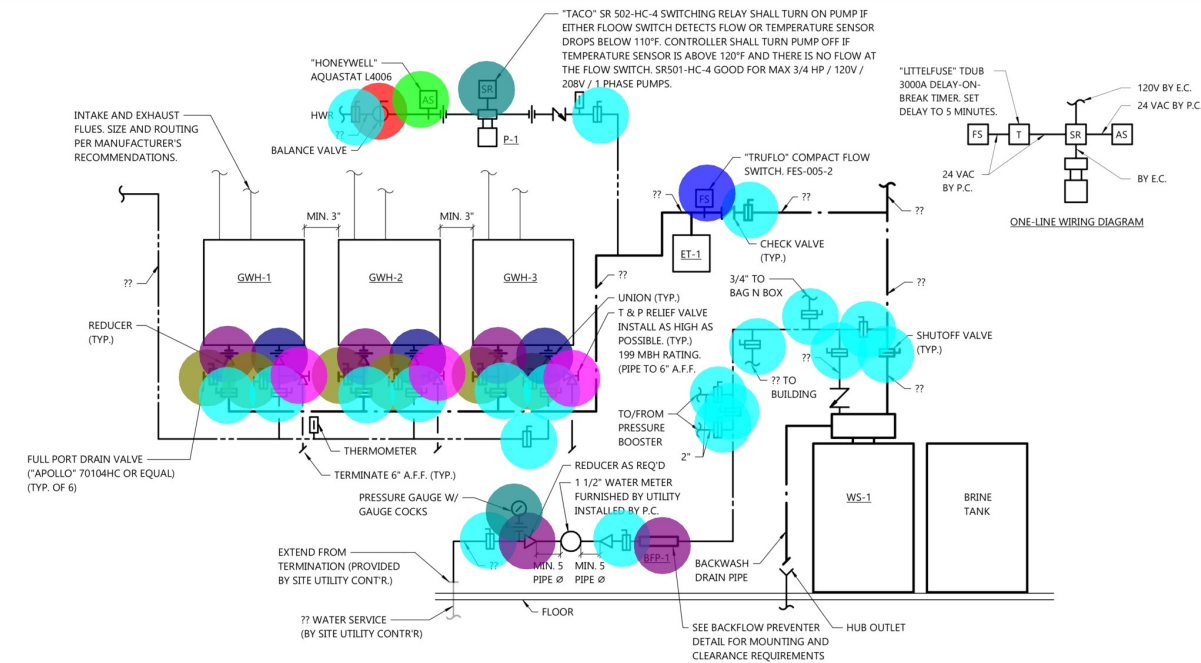
PIPE SIZE	STEEL					COPPER			MIN. ROD	
	WATER	VAPOR	NAT. GAS	WATER	VAPOR	CPVC	PEX		METAL PIPE	PLASTIC PIPE
1/4"-1/2"	7"	8"	6"	5"	6"	4"	32"		3/8"	3/8"
3/4"	7"	9"	8"	6"	7"	4"	32"		3/8"	3/8"
1"	7"	9"	8"	6"	7"	4"	32"		3/8"	3/8"
1 1/4"	7"	9"	10"	7"	9"	4"	32"		3/8"	3/8"
1 1/2"	9"	12"	10"	8"	10"	4"	32"		3/8"	3/8"
2"	10"	12"	10"	8"	11"	4"	32"		3/8"	3/8"
2 1/2"	11"	12"	10"	9"	12"	4"	32"		3/8"	3/8"
3"	12"	12"	10"	10"	12"	4"	32"		3/8"	3/8"
4"	12"	12"	10"	12"	12"	4"	-		3/8"	3/8"
6"	12"	12"	10"	12"	12"	4"	-		3/8"	3/8"
8"	12"	12"	-	-	-	4"	-		1/2"	3/8"
10"	12"	12"	-	-	-	4"	-		1/2"	3/8"
12"	12"	12"	-	-	-	4"	-		5/8"	3/8"
14"	12"	12"	-	-	-	4"	-		5/8"	3/8"
16"	12"	12"	-	-	-	4"	-		3/4"	3/8"
MAX VERT. (1)	15'	15'	-	10'	10'	10'	4'		-	-

(1) SUPPORT AT MINIMUM EVERY FLOOR LEVEL OR SPACING LISTED.
MSS = MANUFACTURER'S STANDARDIZATION SOCIETY
- INSTALL ADDITIONAL HANGERS WITHIN 12" OF ELBOWS AND TEES AND AT CONCENTRATED LOADS, INCLUDING VALVES, FLANGES AND STRAINERS 2 1/2" AND LARGER.

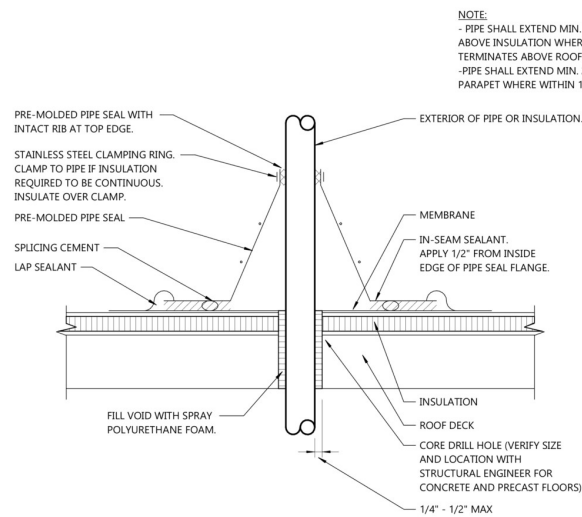
ROD DIA.	MAX LOAD (1)
3/8"	600#
1/2"	1,100#
5/8"	1,800#
3/4"	2,700#

(1) MAX LOAD IS WEIGHT ALLOWED PER EACH ROD.

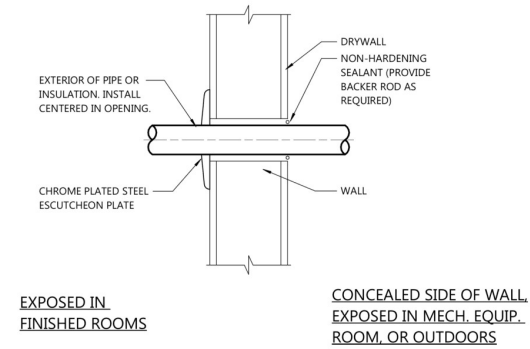
1 PIPE SUPPORT AND HANGER ROD SCHEDULE
P3.0 NOT TO SCALE



7 WATER HEATER PIPING DETAIL
P3.0 NOT TO SCALE

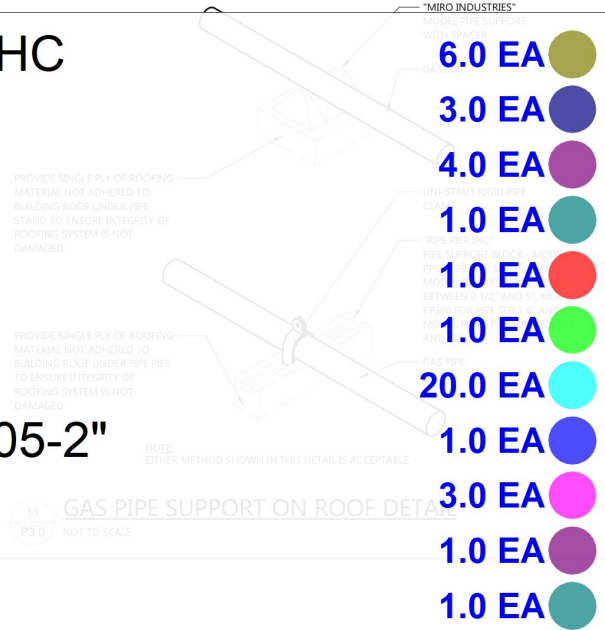


6 ROOF PIPE BOOT PENETRATION DETAIL
P3.0 NOT TO SCALE

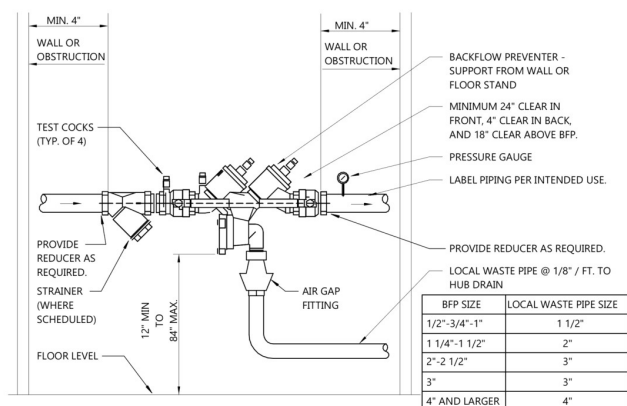


5 PIPE PENETRATION THRU STUD WALL
P3.0 NOT TO SCALE

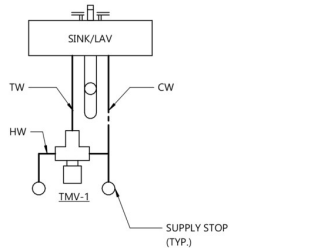
- Full Port Drain Valve "Apollo" 70104HC
- Union
- Reducer
- Switching Rela "Taco SR 502-HC-4
- Balance Valve
- Honeywell "Aquastat L4006"
- Shutt Off Valve
- Compact Flow Switch "Trufluo FES-005-2"
- T&P Relief Valve
- BFP-1
- Pressure Guage w/ Gauge Cocks



11 GAS PIPE SUPPORT ON ROOF DETAIL
P3.0 NOT TO SCALE



10 BACKFLOW PREVENTER DETAIL
P3.0 NOT TO SCALE



9 TMV-1 DETAIL
P3.0 NOT TO SCALE

PROJECT INFORMATION

NEW BUILDING FOR:
TACO BELL - BLACK RIVER BELLS
E. LINCOLNWAY • LA PORTE, IN 46350

PROFESSIONAL SEAL

SHEET DATES

SHEET ISSUE FEB. 2, 2024

REVISIONS

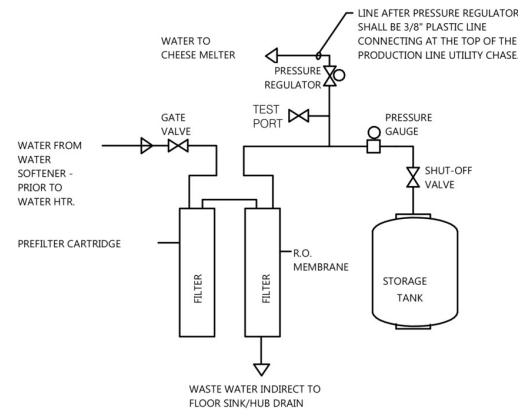
JOB NUMBER

240006400

SHEET NUMBER

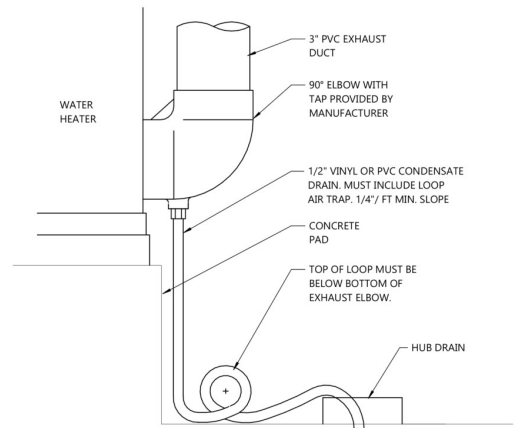
P3.1

PLUMBING DETAILS



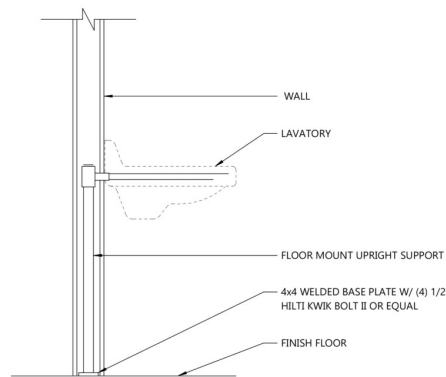
1 REVERSE OSMOSIS SYSTEM

P3.1 NOT TO SCALE



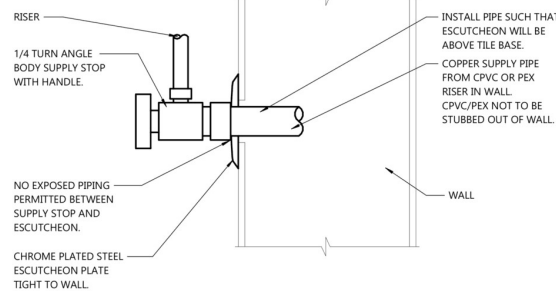
5 WATER HEATER CONDENSATE DETAIL

P3.1 NOT TO SCALE



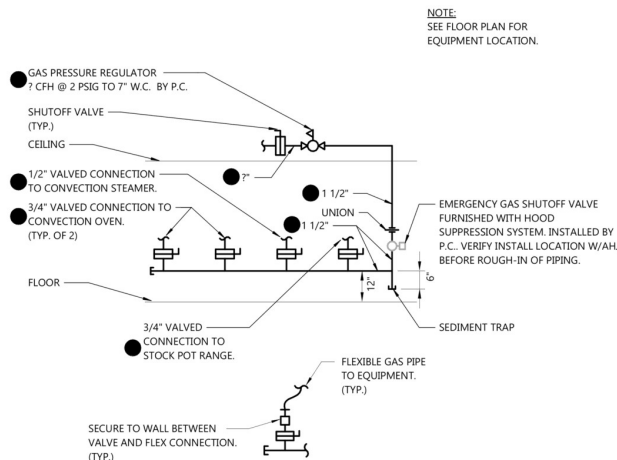
2 LAVATORY SUPPORT

P3.1 NOT TO SCALE



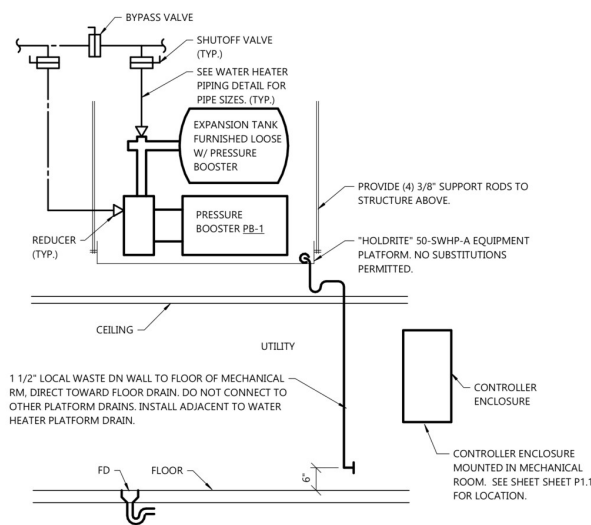
6 ANGLE STOP DETAIL

P3.1 NOT TO SCALE



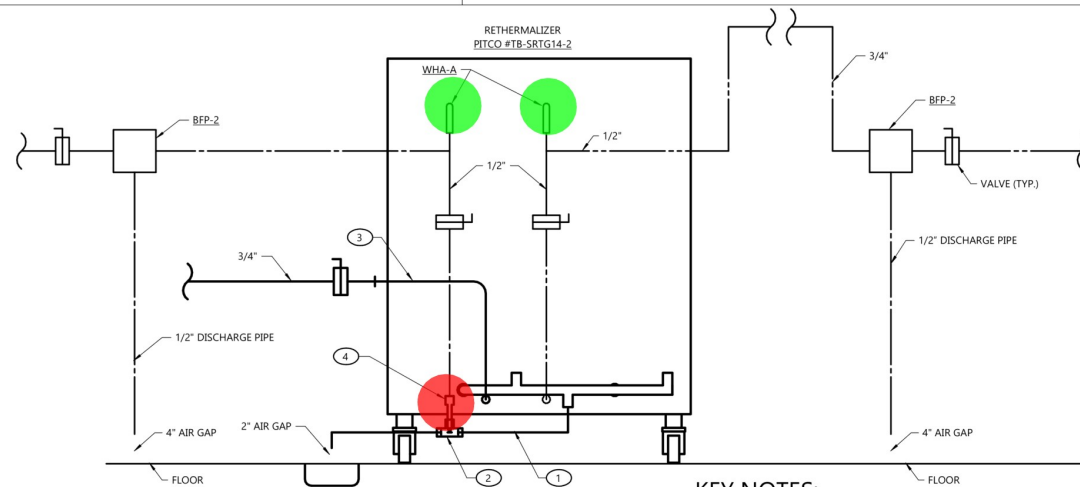
7 KITCHEN EQUIPMENT GAS PIPING DETAIL

P3.1 NOT TO SCALE



8 PRESSURE BOOSTER PIPING DETAIL

P3.1 NOT TO SCALE



9 RETHERMALIZER DETAIL

P3.1 NOT TO SCALE

KEY NOTES:

- INDIRECT WASTE PIPING SHALL BE COPPER. PITCH AT 1/4" PER FOOT.
- 1" BRASS TEE. INSTALL DRAIN TEMPERING VALVE PER MANUFACTURER REQUIREMENTS.
- 3/4" GAS HOSE KIT (C-502).
- SELF OPERATING, TEMPERATURE ACTUATED VALVE. MAXIMUM 125 PSIG/205°F. (THERM OMEGA TECH/DTV-325)

Self Operating Temperature Actuated Valve
WHA-A

1.0 EA
2.0 EA